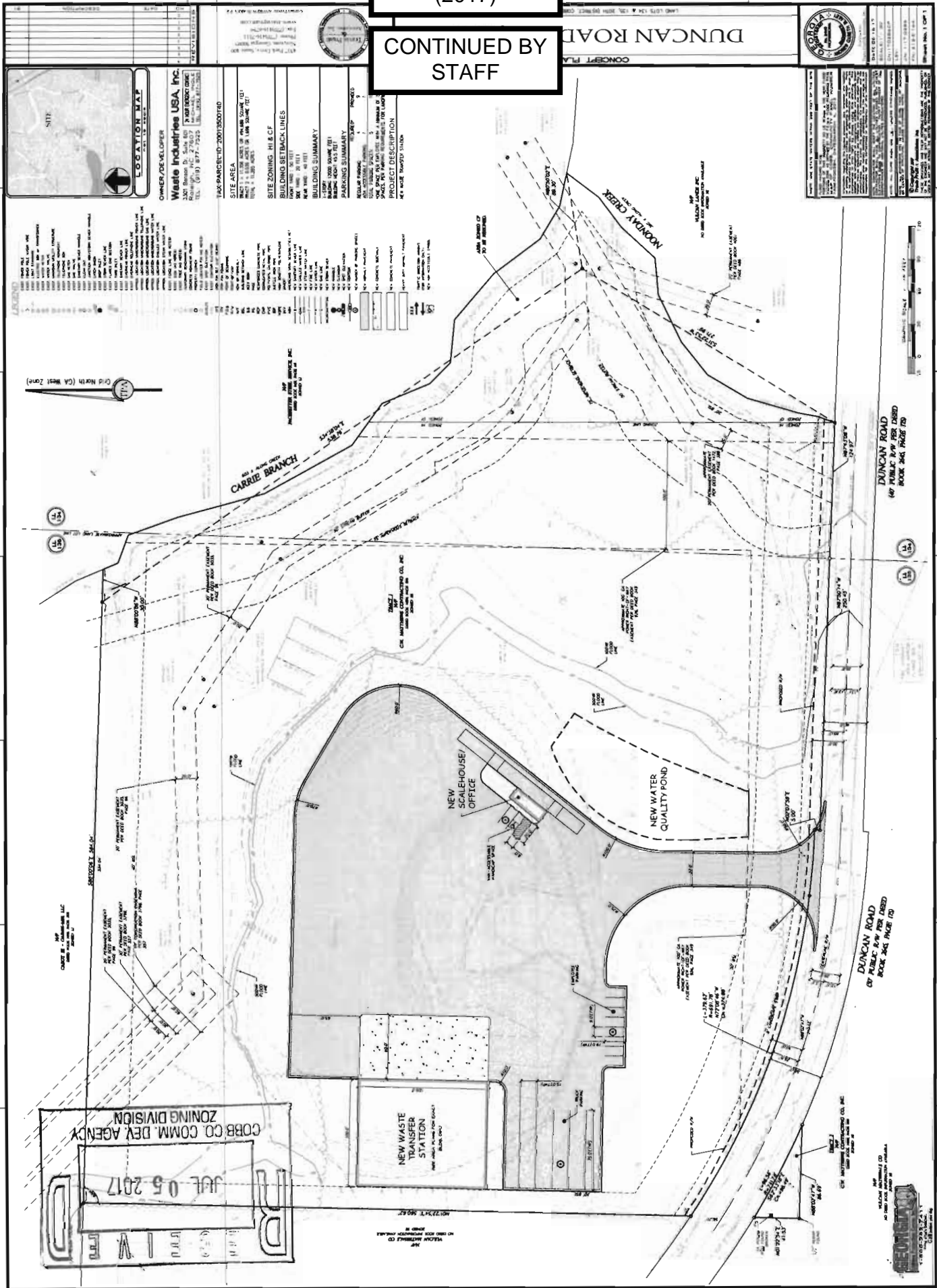


Z-49
(2017)

CONTINUED BY
STAFF



OWNER/DEVELOPER
Waste Industries USA, Inc.
2307 Bessie D. Sims Rd. N.W. RENO, NV 89508
TEL: (775) 777-7245 FAX: (775) 777-7245

TAX-PARCEL-ID: 20013800160

SITE AREA
PROJECT 1.50 ACRES OR THEREABOUTS
TRACT 1.50 ACRES OR THEREABOUTS
BLOCK 1.50 ACRES

SITE ZONING: HI & CF

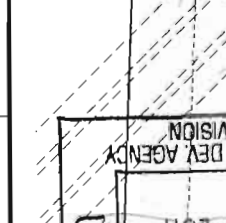
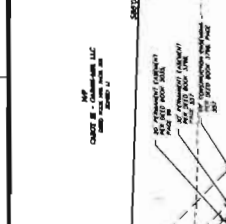
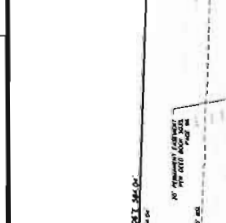
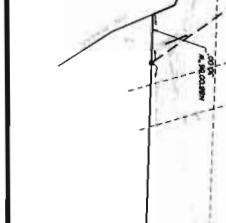
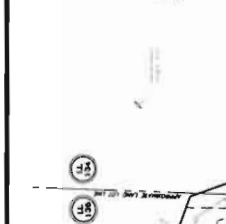
BUILDING SETBACK LINES
FRONT 10 FT
SIDE 10 FT
REAR 10 FT

BUILDING SUMMARY
1. NEW WASTE TRANSFER STATION
2. NEW WASTEHOUSE/OFFICE
3. NEW WATER QUALITY POND

PARKING SUMMARY
TOTAL SPACES: 100
TOTAL STALLS: 100

PROJECT DESCRIPTION
NEW WASTE TRANSFER STATION

- LEGEND**
- 1.00' SETBACK
 - 2.00' SETBACK
 - 3.00' SETBACK
 - 4.00' SETBACK
 - 5.00' SETBACK
 - 6.00' SETBACK
 - 7.00' SETBACK
 - 8.00' SETBACK
 - 9.00' SETBACK
 - 10.00' SETBACK
 - 11.00' SETBACK
 - 12.00' SETBACK
 - 13.00' SETBACK
 - 14.00' SETBACK
 - 15.00' SETBACK
 - 16.00' SETBACK
 - 17.00' SETBACK
 - 18.00' SETBACK
 - 19.00' SETBACK
 - 20.00' SETBACK
 - 21.00' SETBACK
 - 22.00' SETBACK
 - 23.00' SETBACK
 - 24.00' SETBACK
 - 25.00' SETBACK
 - 26.00' SETBACK
 - 27.00' SETBACK
 - 28.00' SETBACK
 - 29.00' SETBACK
 - 30.00' SETBACK
 - 31.00' SETBACK
 - 32.00' SETBACK
 - 33.00' SETBACK
 - 34.00' SETBACK
 - 35.00' SETBACK
 - 36.00' SETBACK
 - 37.00' SETBACK
 - 38.00' SETBACK
 - 39.00' SETBACK
 - 40.00' SETBACK
 - 41.00' SETBACK
 - 42.00' SETBACK
 - 43.00' SETBACK
 - 44.00' SETBACK
 - 45.00' SETBACK
 - 46.00' SETBACK
 - 47.00' SETBACK
 - 48.00' SETBACK
 - 49.00' SETBACK
 - 50.00' SETBACK
 - 51.00' SETBACK
 - 52.00' SETBACK
 - 53.00' SETBACK
 - 54.00' SETBACK
 - 55.00' SETBACK
 - 56.00' SETBACK
 - 57.00' SETBACK
 - 58.00' SETBACK
 - 59.00' SETBACK
 - 60.00' SETBACK
 - 61.00' SETBACK
 - 62.00' SETBACK
 - 63.00' SETBACK
 - 64.00' SETBACK
 - 65.00' SETBACK
 - 66.00' SETBACK
 - 67.00' SETBACK
 - 68.00' SETBACK
 - 69.00' SETBACK
 - 70.00' SETBACK
 - 71.00' SETBACK
 - 72.00' SETBACK
 - 73.00' SETBACK
 - 74.00' SETBACK
 - 75.00' SETBACK
 - 76.00' SETBACK
 - 77.00' SETBACK
 - 78.00' SETBACK
 - 79.00' SETBACK
 - 80.00' SETBACK
 - 81.00' SETBACK
 - 82.00' SETBACK
 - 83.00' SETBACK
 - 84.00' SETBACK
 - 85.00' SETBACK
 - 86.00' SETBACK
 - 87.00' SETBACK
 - 88.00' SETBACK
 - 89.00' SETBACK
 - 90.00' SETBACK
 - 91.00' SETBACK
 - 92.00' SETBACK
 - 93.00' SETBACK
 - 94.00' SETBACK
 - 95.00' SETBACK
 - 96.00' SETBACK
 - 97.00' SETBACK
 - 98.00' SETBACK
 - 99.00' SETBACK
 - 100.00' SETBACK



COBB CO. COMM. DEV. AGENCY
ZONING DIVISION
JUL 05 2017

NEW WASTE TRANSFER STATION
NEW WASTEHOUSE/OFFICE
NEW WATER QUALITY POND

DUNCAN ROAD
467 PUBLIC ROW FOR PHASE 1 AND 2
BACK SAG PHASE 1

DUNCAN ROAD
467 PUBLIC ROW FOR PHASE 1 AND 2
BACK SAG PHASE 2

DUNCAN ROAD
467 PUBLIC ROW FOR PHASE 1 AND 2
BACK SAG PHASE 3

DUNCAN ROAD
467 PUBLIC ROW FOR PHASE 1 AND 2
BACK SAG PHASE 4

DUNCAN ROAD
467 PUBLIC ROW FOR PHASE 1 AND 2
BACK SAG PHASE 5

DUNCAN ROAD
467 PUBLIC ROW FOR PHASE 1 AND 2
BACK SAG PHASE 6

DUNCAN ROAD
467 PUBLIC ROW FOR PHASE 1 AND 2
BACK SAG PHASE 7

DUNCAN ROAD
467 PUBLIC ROW FOR PHASE 1 AND 2
BACK SAG PHASE 8

DUNCAN ROAD
467 PUBLIC ROW FOR PHASE 1 AND 2
BACK SAG PHASE 9

DUNCAN ROAD
467 PUBLIC ROW FOR PHASE 1 AND 2
BACK SAG PHASE 10

DUNCAN ROAD
467 PUBLIC ROW FOR PHASE 1 AND 2
BACK SAG PHASE 11

DUNCAN ROAD
467 PUBLIC ROW FOR PHASE 1 AND 2
BACK SAG PHASE 12

DUNCAN ROAD
467 PUBLIC ROW FOR PHASE 1 AND 2
BACK SAG PHASE 13

DUNCAN ROAD
467 PUBLIC ROW FOR PHASE 1 AND 2
BACK SAG PHASE 14

DUNCAN ROAD
467 PUBLIC ROW FOR PHASE 1 AND 2
BACK SAG PHASE 15

DUNCAN ROAD
467 PUBLIC ROW FOR PHASE 1 AND 2
BACK SAG PHASE 16

DUNCAN ROAD
467 PUBLIC ROW FOR PHASE 1 AND 2
BACK SAG PHASE 17

DUNCAN ROAD
467 PUBLIC ROW FOR PHASE 1 AND 2
BACK SAG PHASE 18

DUNCAN ROAD
467 PUBLIC ROW FOR PHASE 1 AND 2
BACK SAG PHASE 19

DUNCAN ROAD
467 PUBLIC ROW FOR PHASE 1 AND 2
BACK SAG PHASE 20

DUNCAN ROAD
467 PUBLIC ROW FOR PHASE 1 AND 2
BACK SAG PHASE 21

DUNCAN ROAD
467 PUBLIC ROW FOR PHASE 1 AND 2
BACK SAG PHASE 22

DUNCAN ROAD
467 PUBLIC ROW FOR PHASE 1 AND 2
BACK SAG PHASE 23

DUNCAN ROAD
467 PUBLIC ROW FOR PHASE 1 AND 2
BACK SAG PHASE 24

DUNCAN ROAD
467 PUBLIC ROW FOR PHASE 1 AND 2
BACK SAG PHASE 25

DUNCAN ROAD
467 PUBLIC ROW FOR PHASE 1 AND 2
BACK SAG PHASE 26

DUNCAN ROAD
467 PUBLIC ROW FOR PHASE 1 AND 2
BACK SAG PHASE 27

DUNCAN ROAD
467 PUBLIC ROW FOR PHASE 1 AND 2
BACK SAG PHASE 28

DUNCAN ROAD
467 PUBLIC ROW FOR PHASE 1 AND 2
BACK SAG PHASE 29

DUNCAN ROAD
467 PUBLIC ROW FOR PHASE 1 AND 2
BACK SAG PHASE 30

DUNCAN ROAD
467 PUBLIC ROW FOR PHASE 1 AND 2
BACK SAG PHASE 31

DUNCAN ROAD
467 PUBLIC ROW FOR PHASE 1 AND 2
BACK SAG PHASE 32

DUNCAN ROAD
467 PUBLIC ROW FOR PHASE 1 AND 2
BACK SAG PHASE 33

DUNCAN ROAD
467 PUBLIC ROW FOR PHASE 1 AND 2
BACK SAG PHASE 34

DUNCAN ROAD
467 PUBLIC ROW FOR PHASE 1 AND 2
BACK SAG PHASE 35

DUNCAN ROAD
467 PUBLIC ROW FOR PHASE 1 AND 2
BACK SAG PHASE 36

DUNCAN ROAD
467 PUBLIC ROW FOR PHASE 1 AND 2
BACK SAG PHASE 37

DUNCAN ROAD
467 PUBLIC ROW FOR PHASE 1 AND 2
BACK SAG PHASE 38

DUNCAN ROAD
467 PUBLIC ROW FOR PHASE 1 AND 2
BACK SAG PHASE 39

DUNCAN ROAD
467 PUBLIC ROW FOR PHASE 1 AND 2
BACK SAG PHASE 40

DUNCAN ROAD
467 PUBLIC ROW FOR PHASE 1 AND 2
BACK SAG PHASE 41

DUNCAN ROAD
467 PUBLIC ROW FOR PHASE 1 AND 2
BACK SAG PHASE 42

DUNCAN ROAD
467 PUBLIC ROW FOR PHASE 1 AND 2
BACK SAG PHASE 43

DUNCAN ROAD
467 PUBLIC ROW FOR PHASE 1 AND 2
BACK SAG PHASE 44

DUNCAN ROAD
467 PUBLIC ROW FOR PHASE 1 AND 2
BACK SAG PHASE 45

DUNCAN ROAD
467 PUBLIC ROW FOR PHASE 1 AND 2
BACK SAG PHASE 46

DUNCAN ROAD
467 PUBLIC ROW FOR PHASE 1 AND 2
BACK SAG PHASE 47

DUNCAN ROAD
467 PUBLIC ROW FOR PHASE 1 AND 2
BACK SAG PHASE 48

DUNCAN ROAD
467 PUBLIC ROW FOR PHASE 1 AND 2
BACK SAG PHASE 49

DUNCAN ROAD
467 PUBLIC ROW FOR PHASE 1 AND 2
BACK SAG PHASE 50

DUNCAN ROAD
467 PUBLIC ROW FOR PHASE 1 AND 2
BACK SAG PHASE 51

DUNCAN ROAD
467 PUBLIC ROW FOR PHASE 1 AND 2
BACK SAG PHASE 52

DUNCAN ROAD
467 PUBLIC ROW FOR PHASE 1 AND 2
BACK SAG PHASE 53

DUNCAN ROAD
467 PUBLIC ROW FOR PHASE 1 AND 2
BACK SAG PHASE 54

DUNCAN ROAD
467 PUBLIC ROW FOR PHASE 1 AND 2
BACK SAG PHASE 55

DUNCAN ROAD
467 PUBLIC ROW FOR PHASE 1 AND 2
BACK SAG PHASE 56

DUNCAN ROAD
467 PUBLIC ROW FOR PHASE 1 AND 2
BACK SAG PHASE 57

DUNCAN ROAD
467 PUBLIC ROW FOR PHASE 1 AND 2
BACK SAG PHASE 58

DUNCAN ROAD
467 PUBLIC ROW FOR PHASE 1 AND 2
BACK SAG PHASE 59

DUNCAN ROAD
467 PUBLIC ROW FOR PHASE 1 AND 2
BACK SAG PHASE 60

DUNCAN ROAD
467 PUBLIC ROW FOR PHASE 1 AND 2
BACK SAG PHASE 61

DUNCAN ROAD
467 PUBLIC ROW FOR PHASE 1 AND 2
BACK SAG PHASE 62

DUNCAN ROAD
467 PUBLIC ROW FOR PHASE 1 AND 2
BACK SAG PHASE 63

DUNCAN ROAD
467 PUBLIC ROW FOR PHASE 1 AND 2
BACK SAG PHASE 64

DUNCAN ROAD
467 PUBLIC ROW FOR PHASE 1 AND 2
BACK SAG PHASE 65

DUNCAN ROAD
467 PUBLIC ROW FOR PHASE 1 AND 2
BACK SAG PHASE 66

DUNCAN ROAD
467 PUBLIC ROW FOR PHASE 1 AND 2
BACK SAG PHASE 67

DUNCAN ROAD
467 PUBLIC ROW FOR PHASE 1 AND 2
BACK SAG PHASE 68

DUNCAN ROAD
467 PUBLIC ROW FOR PHASE 1 AND 2
BACK SAG PHASE 69

DUNCAN ROAD
467 PUBLIC ROW FOR PHASE 1 AND 2
BACK SAG PHASE 70

DUNCAN ROAD
467 PUBLIC ROW FOR PHASE 1 AND 2
BACK SAG PHASE 71

DUNCAN ROAD
467 PUBLIC ROW FOR PHASE 1 AND 2
BACK SAG PHASE 72

DUNCAN ROAD
467 PUBLIC ROW FOR PHASE 1 AND 2
BACK SAG PHASE 73

DUNCAN ROAD
467 PUBLIC ROW FOR PHASE 1 AND 2
BACK SAG PHASE 74

DUNCAN ROAD
467 PUBLIC ROW FOR PHASE 1 AND 2
BACK SAG PHASE 75

DUNCAN ROAD
467 PUBLIC ROW FOR PHASE 1 AND 2
BACK SAG PHASE 76

DUNCAN ROAD
467 PUBLIC ROW FOR PHASE 1 AND 2
BACK SAG PHASE 77

DUNCAN ROAD
467 PUBLIC ROW FOR PHASE 1 AND 2
BACK SAG PHASE 78

DUNCAN ROAD
467 PUBLIC ROW FOR PHASE 1 AND 2
BACK SAG PHASE 79

DUNCAN ROAD
467 PUBLIC ROW FOR PHASE 1 AND 2
BACK SAG PHASE 80

DUNCAN ROAD
467 PUBLIC ROW FOR PHASE 1 AND 2
BACK SAG PHASE 81

DUNCAN ROAD
467 PUBLIC ROW FOR PHASE 1 AND 2
BACK SAG PHASE 82

DUNCAN ROAD
467 PUBLIC ROW FOR PHASE 1 AND 2
BACK SAG PHASE 83

DUNCAN ROAD
467 PUBLIC ROW FOR PHASE 1 AND 2
BACK SAG PHASE 84

DUNCAN ROAD
467 PUBLIC ROW FOR PHASE 1 AND 2
BACK SAG PHASE 85

DUNCAN ROAD
467 PUBLIC ROW FOR PHASE 1 AND 2
BACK SAG PHASE 86

DUNCAN ROAD
467 PUBLIC ROW FOR PHASE 1 AND 2
BACK SAG PHASE 87

DUNCAN ROAD
467 PUBLIC ROW FOR PHASE 1 AND 2
BACK SAG PHASE 88

DUNCAN ROAD
467 PUBLIC ROW FOR PHASE 1 AND 2
BACK SAG PHASE 89

DUNCAN ROAD
467 PUBLIC ROW FOR PHASE 1 AND 2
BACK SAG PHASE 90

DUNCAN ROAD
467 PUBLIC ROW FOR PHASE 1 AND 2
BACK SAG PHASE 91

DUNCAN ROAD
467 PUBLIC ROW FOR PHASE 1 AND 2
BACK SAG PHASE 92

DUNCAN ROAD
467 PUBLIC ROW FOR PHASE 1 AND 2
BACK SAG PHASE 93

DUNCAN ROAD
467 PUBLIC ROW FOR PHASE 1 AND 2
BACK SAG PHASE 94

DUNCAN ROAD
467 PUBLIC ROW FOR PHASE 1 AND 2
BACK SAG PHASE 95

DUNCAN ROAD
467 PUBLIC ROW FOR PHASE 1 AND 2
BACK SAG PHASE 96

DUNCAN ROAD
467 PUBLIC ROW FOR PHASE 1 AND 2
BACK SAG PHASE 97

DUNCAN ROAD
467 PUBLIC ROW FOR PHASE 1 AND 2
BACK SAG PHASE 98

DUNCAN ROAD
467 PUBLIC ROW FOR PHASE 1 AND 2
BACK SAG PHASE 99

DUNCAN ROAD
467 PUBLIC ROW FOR PHASE 1 AND 2
BACK SAG PHASE 100

APPLICANT: Waste Industries, Atlanta, LLC

PETITION NO: Z-49

PHONE #: (919) 877-7525 EMAIL: Mike.ingle@wasteindustries.com

HEARING DATE (PC): 09-07-17

REPRESENTATIVE: Garvis L. Sams, Jr.

HEARING DATE (BOC): 09-19-17

PHONE #: (770) 422-7016 EMAIL: gsams@slhb-law.com

PRESENT ZONING: CF & R-20

TITLEHOLDER: C.W. Matthews Contracting Co., Inc.

PROPOSED ZONING: HI

PROPERTY LOCATION: North side and south side of Duncan Road,
west of Barrett Lakes Boulevard

PROPOSED USE: Transfer Station

ACCESS TO PROPERTY: Duncan Road

SIZE OF TRACT: 0.901 ac

DISTRICT: 20

PHYSICAL CHARACTERISTICS TO SITE: _____

LAND LOT(S): 134,135

PARCEL(S): 14

TAXES: PAID X DUE _____

CONTIGUOUS ZONING/DEVELOPMENT

COMMISSION DISTRICT: 3

*****CONTINUED BY STAFF*****

NORTH:

SOUTH:

EAST:

WEST:

OPPOSITION: NO. OPPOSED _____ PETITION NO: _____ SPOKESMAN _____

PLANNING COMMISSION RECOMMENDATION

APPROVED _____ MOTION BY _____

REJECTED _____ SECONDED _____

HELD _____ VOTE _____

BOARD OF COMMISSIONERS DECISION

APPROVED _____ MOTION BY _____

REJECTED _____ SECONDED _____

HELD _____ VOTE _____

STIPULATIONS: