

RECEIVED
JUL 11 2017
CHHB CO. COMM. DEV. AGENCY
ZONING DIVISION

SITE DATA		
SHEET LOCATION: 300 BARRETT PARKWAY, WINDHAM, CT		
CITY: WINDHAM, CT		
COUNTY: WINDHAM, CT		
SHEET LOCATION: 300 BARRETT PARKWAY, WINDHAM, CT		
SHEET LOCATION: 300 BARRETT PARKWAY, WINDHAM, CT		
SHEET LOCATION: 300 BARRETT PARKWAY, WINDHAM, CT		
SHEET LOCATION: 300 BARRETT PARKWAY, WINDHAM, CT		
SHEET LOCATION: 300 BARRETT PARKWAY, WINDHAM, CT		
SHEET LOCATION: 300 BARRETT PARKWAY, WINDHAM, CT		

PROPOSED CONCRETE CURB/LANDSCAPE FINES AND FINISHES		
ITEM	DESCRIPTION	QUANTITY
1	CONCRETE CURB	1,113.00 LF
2	CONCRETE FINES	1,113.00 SF
3	CONCRETE FINES	1,113.00 SF
4	CONCRETE FINES	1,113.00 SF
5	CONCRETE FINES	1,113.00 SF
6	CONCRETE FINES	1,113.00 SF
7	CONCRETE FINES	1,113.00 SF
8	CONCRETE FINES	1,113.00 SF
9	CONCRETE FINES	1,113.00 SF
10	CONCRETE FINES	1,113.00 SF

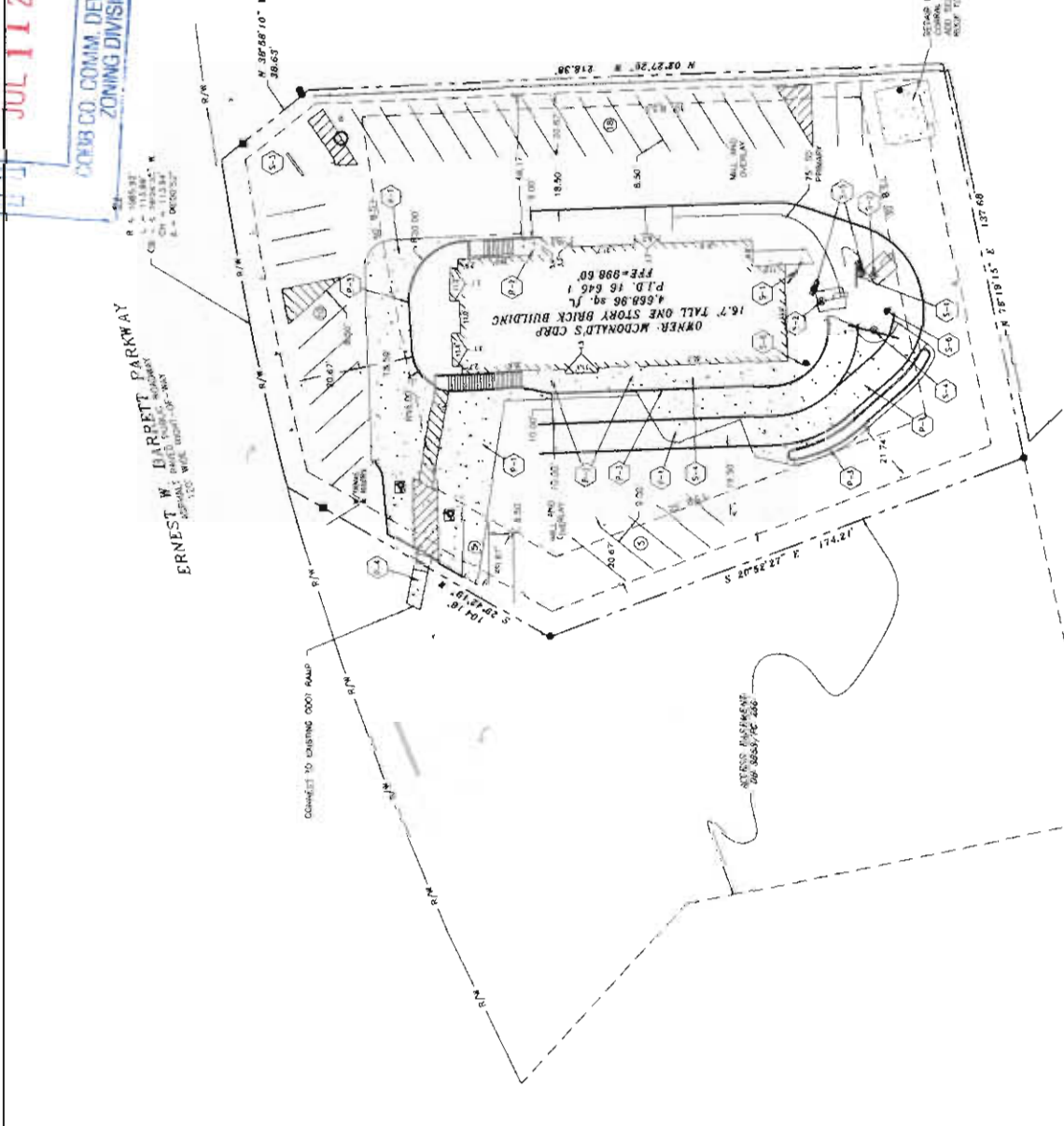
PROPOSED SIGNAGE		
ITEM	DESCRIPTION	QUANTITY
1	EXISTING METAL SIGN TO REMAIN	1
2	EXISTING METAL SIGN TO REMAIN	1
3	EXISTING METAL SIGN TO REMAIN	1
4	EXISTING METAL SIGN TO REMAIN	1
5	EXISTING METAL SIGN TO REMAIN	1
6	EXISTING METAL SIGN TO REMAIN	1
7	EXISTING METAL SIGN TO REMAIN	1
8	EXISTING METAL SIGN TO REMAIN	1
9	EXISTING METAL SIGN TO REMAIN	1
10	EXISTING METAL SIGN TO REMAIN	1

NOTES:
1. SITE IS LOCATED IN LAND LOT 645 OF THE 18TH DISTRICT, CHHB CO. COMM. DEV. AGENCY.
2. THIS SITE IS NOT LOCATED IN A FLOOD PLAIN OR FEMA FLOOD MAP. (SEE MAPS FOR FLOOD PLAIN AND FLOOD MAP).
3. THERE ARE NO WATERS OF THE STATE LOCATED ON THE SITE.
4. THERE ARE NO WATERS OF THE STATE LOCATED ON THE SITE.

PROPOSED SIGNAGE		
ITEM	DESCRIPTION	QUANTITY
1	EXISTING METAL SIGN TO REMAIN	1
2	EXISTING METAL SIGN TO REMAIN	1
3	EXISTING METAL SIGN TO REMAIN	1
4	EXISTING METAL SIGN TO REMAIN	1
5	EXISTING METAL SIGN TO REMAIN	1
6	EXISTING METAL SIGN TO REMAIN	1
7	EXISTING METAL SIGN TO REMAIN	1
8	EXISTING METAL SIGN TO REMAIN	1
9	EXISTING METAL SIGN TO REMAIN	1
10	EXISTING METAL SIGN TO REMAIN	1

PROPOSED SIGNAGE		
ITEM	DESCRIPTION	QUANTITY
1	EXISTING METAL SIGN TO REMAIN	1
2	EXISTING METAL SIGN TO REMAIN	1
3	EXISTING METAL SIGN TO REMAIN	1
4	EXISTING METAL SIGN TO REMAIN	1
5	EXISTING METAL SIGN TO REMAIN	1
6	EXISTING METAL SIGN TO REMAIN	1
7	EXISTING METAL SIGN TO REMAIN	1
8	EXISTING METAL SIGN TO REMAIN	1
9	EXISTING METAL SIGN TO REMAIN	1
10	EXISTING METAL SIGN TO REMAIN	1

Withdrawn Without Prejudice



McDONALD'S RESTAURANT

McDONALD'S CORPORATION

ONE GLENVIEW AVENUE, SUITE 200, ATLANTA, GA 30329

McDONALD'S RESTAURANT

300 BARRETT PARKWAY, WINDHAM, CT 06095

McDONALD'S RESTAURANT

300 BARRETT PARKWAY, WINDHAM, CT 06095

V-92

(2017)

McDONALD'S RESTAURANT

300 BARRETT PARKWAY, WINDHAM, CT 06095

McDONALD'S RESTAURANT

300 BARRETT PARKWAY, WINDHAM, CT 06095

McDONALD'S RESTAURANT

300 BARRETT PARKWAY, WINDHAM, CT 06095

McDONALD'S RESTAURANT

300 BARRETT PARKWAY, WINDHAM, CT 06095

APPLICANT: <u>Axis Infrastructure LLC</u>	PETITION No.: <u>V-92</u>
PHONE: <u>678-395-4920</u>	DATE OF HEARING: <u>9-13-2017</u>
REPRESENTATIVE: <u>Teresa Curry, P.E.</u>	PRESENT ZONING: <u>GC</u>
PHONE: <u>678-395-4920</u>	LAND LOT(S): <u>645</u>
TITLEHOLDER: <u>McDonald's Corporation</u>	DISTRICT: <u>16</u>
PROPERTY LOCATION: <u>At the southwest intersection of I-575 and Ernest Barrett Parkway (305 Ernest Barrett Parkway).</u>	SIZE OF TRACT: <u>0.94 acres</u>
	COMMISSION DISTRICT: <u>3</u>
TYPE OF VARIANCE: <u>Waive the minimum number of parking spaces from the required 47 to 38 (existing).</u>	

Withdrawn Without Prejudice

OPPOSITION: No. OPPOSED PETITION No. SPOKESMAN

BOARD OF APPEALS DECISION

APPROVED MOTION BY

REJECTED SECONDED

HELD CARRIED

STIPULATIONS:

