

PREPARED BY  
**NPSG**  
NORTH STATE PLANNING & DESIGN GROUP, INC.  
7105 BARRETT MARK DRIVE  
KENNESAW, GA 30144  
CONTACT: (770) 417-1200  
WWW.NPSGDESIGN.COM

PREPARED FOR  
DOBBINS MILL, LLC  
131 KODOMO STREET  
MARIETTA, GA 30064  
ZALCONAKI, JIM  
JIM@DOBBINSMILL.COM  
770-134-8316

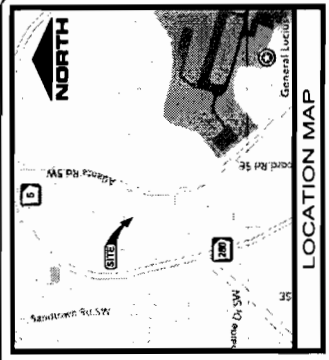
CORB COUNTY, GEORGIA  
DISTRICT 000040  
TRIAL PARK

SLUP-3  
(2016)  
**CONTINUED BY  
STAFF**



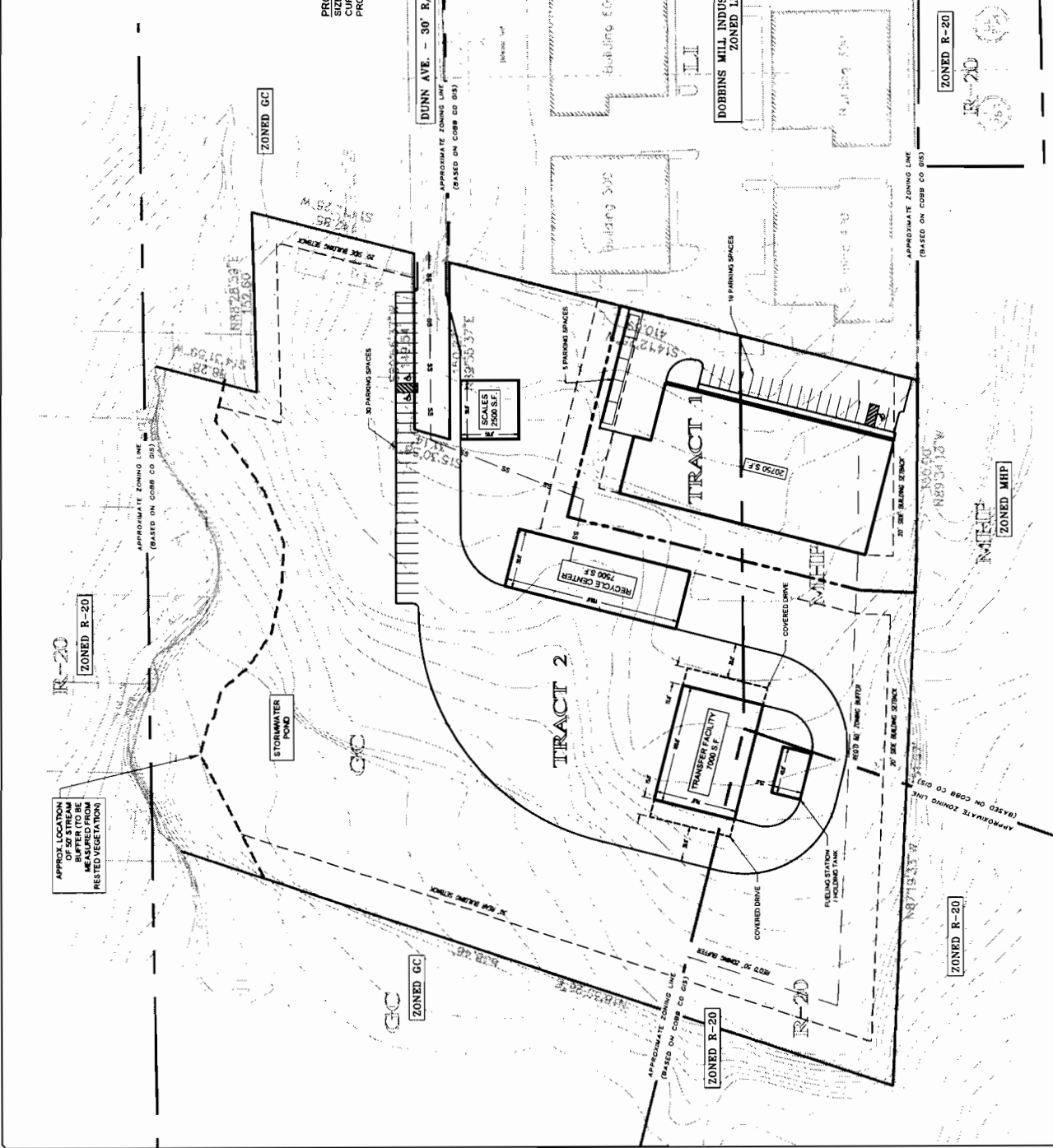
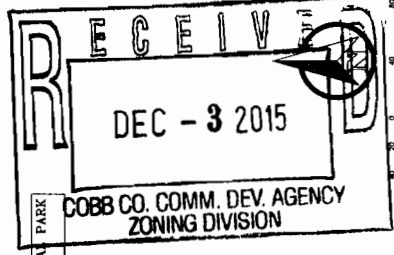
NO.	DATE	REVISION
1		INITIAL TO COUNTY

SCALE BY: JLM  
SCALE: (AS SHOWN)  
**C-0**  
DATE: 12-04-14  
SHEET: 14-028



PROPERTY INFORMATION:  
8.00 ACRES  
GENERAL ZONING: MHP (BASED ON COBB CO GIS)  
PROPOSED ZONING: U (LIGHT INDUSTRIAL)

PARKING ANALYSIS	
SPACES REQUIRED	7002 SF WAREHOUSE
1 SPACE PER	700 SF OFFICE
TOTAL BUILDING AREA	20750 SQ
80% WAREHOUSE	16600
20% OFFICE	4150
400 SF / 7 SPACES	571 SPACES WAREHOUSE
400 SF / 2000 SF	20 SPACES OFFICE
SPACES PROVIDED = 24 SPACES	



APPLICANT: Dobbins Mill, LLC

PHONE#: (770) 354-5836 EMAIL: jim@johnsonandco.net

REPRESENTATIVE: J. Kevin Moore

PHONE#: (770) 429-1499 EMAIL: jkm@mijs.com

TITLEHOLDER: East Brook Development, LLC

PROPERTY LOCATION: Terminus of Dunn Avenue, west side of West Atlanta Street.

ACCESS TO PROPERTY: Dunn Avenue

PHYSICAL CHARACTERISTICS TO SITE: Currently used as a mobile home park

**CONTIGUOUS ZONING/DEVELOPMENT**

- NORTH: R-20/ Cobb Heights Subdivision
- SOUTH: R-20, MHP/ Undeveloped, Mobile Home Park
- EAST: GC, R-20/ Mobile Home Park
- WEST: GC, LI/ Mobile Home Park, Dobbins Mill Industrial Park

OPPOSITION: NO. OPPOSED PETITION NO:        SPOKESMAN       

**PLANNING COMMISSION RECOMMENDATION**

APPROVED        MOTION BY       

REJECTED        SECONDED       

HELD        CARRIED       

**BOARD OF COMMISSIONERS DECISION**

APPROVED        MOTION BY       

REJECTED        SECONDED       

HELD        CARRIED       

STIPULATIONS:

PETITION NO: SLUP-3

HEARING DATE (PC): 02-02-16

HEARING DATE (BOC): 02-16-16

PRESENT ZONING: R-20, MHP, GC

PROPOSED ZONING: Special Land Use Permit

PROPOSED USE: Waste Transfer Station

SIZE OF TRACT: 8.03 acres

DISTRICT: 17

LAND LOT(S): 283

PARCEL(S): 4

TAXES: PAID X DUE       

COMMISSION DISTRICT: 4

\*\*\*CONTINUED BY STAFF\*\*\*

*Adjacent Future Land Use:*

- North: Industrial Compatible (IC)
- East: Industrial Compatible (IC)
- South: Industrial Compatible (IC)
- West: Industrial Compatible (IC)

