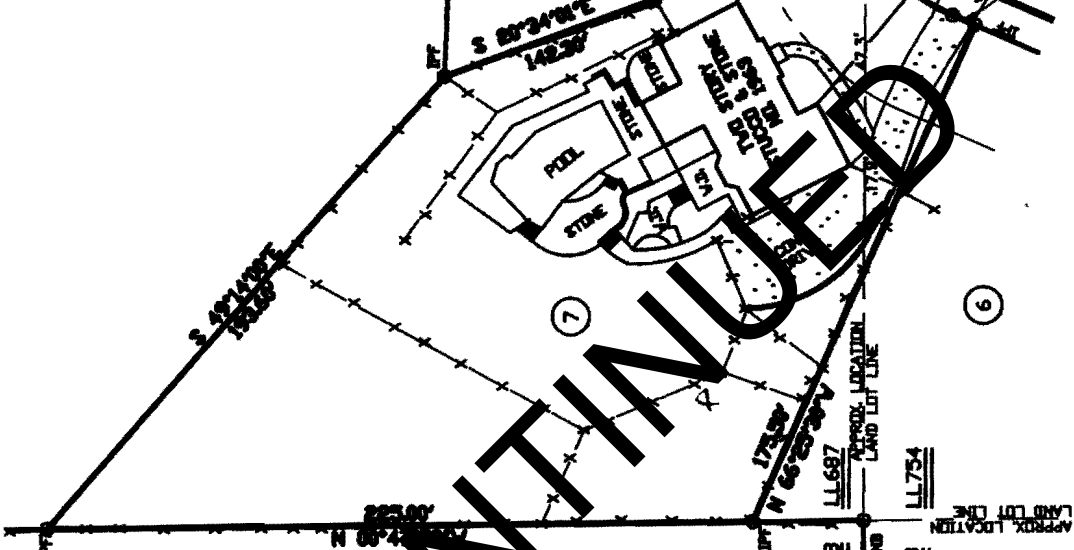


V-1 (2013)



AREA = 32,143 SQ.FT. / 0.7379 ACRE



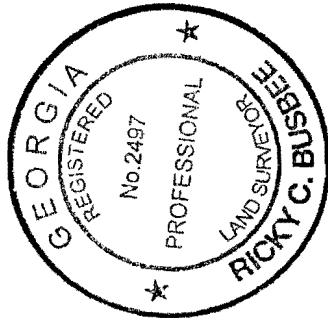
CONTINGUED

THIS PROPERTY IS NOT IN AN AREA HAVING SPECIAL FLOOD HAZARDS AS PER COMMUNITY PANEL NO. 130670031 G, DATED DECEMBER 16, 2006, ZONE "X". THIS SURVEY WAS NOT PREPARED WITH THE AID OF A TITLE SEARCH AND IS SUBJECT TO ANY RESTRICTIONS OR EASEMENTS THAT MAY BE RECORDED.

TOPCON GTS-225 CREV-HP/78 DRAWN BY SGI JIN. 2P10310 - 1ND

SURVEY FOR
LARRY EPSTEIN
BONNIE EPSTEIN
 LOT 7, BLOCK 'A'
 KENSINGTON SUBD.
 PLAT BOOK 588, PAGE 4
 LOTS 664 & 754 54th DISTRICT 2nd SECTION
 COBB COUNTY, GEORGIA
 SCALE: 1"=40' DATED OCTOBER 19th, 2012

BUSBEE & PUSS
LAND SURVEYING COMPANY
 3408 HOWELL STREET, SUITE A
 MARIETTA, GEORGIA 30096
 770.497.9866
 FAX: 770.497.9881
 www.busbeeandpuss.com



- OPEN
- 1/8" (1/2" IN)
- 1/4" (1/2" IN)
- 3/8" (1/2" IN)
- 1/2" (1/2" IN)
- 5/8" (1/2" IN)
- 3/4" (1/2" IN)
- 1" (1/2" IN)
- 1 1/4" (1/2" IN)
- 1 1/2" (1/2" IN)
- 1 3/4" (1/2" IN)
- 2" (1/2" IN)
- 2 1/4" (1/2" IN)
- 2 1/2" (1/2" IN)
- 2 3/4" (1/2" IN)
- 3" (1/2" IN)
- 3 1/4" (1/2" IN)
- 3 1/2" (1/2" IN)
- 3 3/4" (1/2" IN)
- 4" (1/2" IN)
- 4 1/4" (1/2" IN)
- 4 1/2" (1/2" IN)
- 4 3/4" (1/2" IN)
- 5" (1/2" IN)
- 5 1/4" (1/2" IN)
- 5 1/2" (1/2" IN)
- 5 3/4" (1/2" IN)
- 6" (1/2" IN)
- 6 1/4" (1/2" IN)
- 6 1/2" (1/2" IN)
- 6 3/4" (1/2" IN)
- 7" (1/2" IN)
- 7 1/4" (1/2" IN)
- 7 1/2" (1/2" IN)
- 7 3/4" (1/2" IN)
- 8" (1/2" IN)
- 8 1/4" (1/2" IN)
- 8 1/2" (1/2" IN)
- 8 3/4" (1/2" IN)
- 9" (1/2" IN)
- 9 1/4" (1/2" IN)
- 9 1/2" (1/2" IN)
- 9 3/4" (1/2" IN)
- 10" (1/2" IN)
- 10 1/4" (1/2" IN)
- 10 1/2" (1/2" IN)
- 10 3/4" (1/2" IN)
- 11" (1/2" IN)
- 11 1/4" (1/2" IN)
- 11 1/2" (1/2" IN)
- 11 3/4" (1/2" IN)
- 12" (1/2" IN)
- 12 1/4" (1/2" IN)
- 12 1/2" (1/2" IN)
- 12 3/4" (1/2" IN)
- 13" (1/2" IN)
- 13 1/4" (1/2" IN)
- 13 1/2" (1/2" IN)
- 13 3/4" (1/2" IN)
- 14" (1/2" IN)
- 14 1/4" (1/2" IN)
- 14 1/2" (1/2" IN)
- 14 3/4" (1/2" IN)
- 15" (1/2" IN)
- 15 1/4" (1/2" IN)
- 15 1/2" (1/2" IN)
- 15 3/4" (1/2" IN)
- 16" (1/2" IN)
- 16 1/4" (1/2" IN)
- 16 1/2" (1/2" IN)
- 16 3/4" (1/2" IN)
- 17" (1/2" IN)
- 17 1/4" (1/2" IN)
- 17 1/2" (1/2" IN)
- 17 3/4" (1/2" IN)
- 18" (1/2" IN)
- 18 1/4" (1/2" IN)
- 18 1/2" (1/2" IN)
- 18 3/4" (1/2" IN)
- 19" (1/2" IN)
- 19 1/4" (1/2" IN)
- 19 1/2" (1/2" IN)
- 19 3/4" (1/2" IN)
- 20" (1/2" IN)

MAGNETIC NORTH

APPLICANT: Larry Joel Epstein and Bonnie Irlyn Epstein

PHONE: 770-565-4955

REPRESENTATIVE: Larry and Bonnie Epstein

PHONE: 770-565-4955

TITLEHOLDER: Larry Joel Epstein and Bonnie Irlyn Epstein

PROPERTY LOCATION: On the northern end of Wellington Lane, east of Johnson Ferry Road (1963 Wellington Lane).

TYPE OF VARIANCE: To permit poultry (ducks) on a lot containing less than two acres.

PETITION No.: V-1

DATE OF HEARING: 01-09-13

PRESENT ZONING: R-20, R-15

LAND LOT(S): 687, 754

DISTRICT: 16

SIZE OF TRACT: 0.7379 acre

COMMISSION DISTRICT: 2

CONTINUED UNTIL APRIL 10, 2013 BZA HEARING

OPPOSITION: No. **OPPOSED** _____ **PETITION No.** _____ **SPOKESMAN** _____

BOARD OF APPEALS DECISION

APPROVED _____ **MOTION BY** _____

REJECTED _____ **SECONDED** _____

HELD _____ **CARRIED** _____

STIPULATIONS: _____

