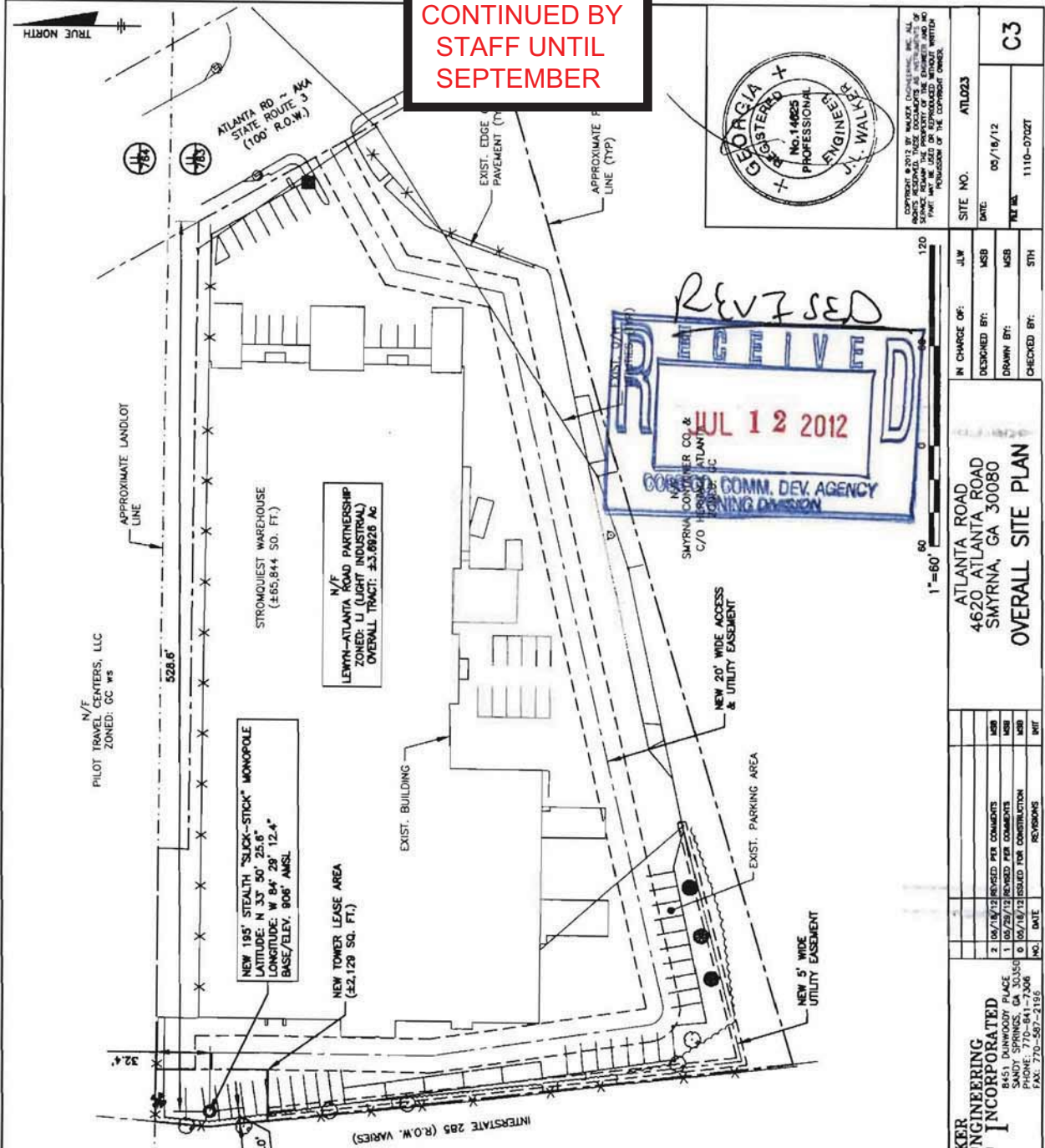


SLUP-3 (2012)
CONTINUED BY
STAFF UNTIL
SEPTEMBER



COMPANY & 2012 BY WALKER ENGINEERING, INC. ALL RIGHTS RESERVED. THESE DOCUMENTS ARE THE PROPERTY OF WALKER ENGINEERING, INC. AND ARE TO BE USED ONLY FOR THE PROJECT AND FOR THE PURPOSES OF THE CONTRACT OWNER.	SITE NO. ATL023
DATE: 09/18/12	C3
DRAWN BY: MSB	1110-0702T
CHECKED BY: STH	

- GENERAL NOTES:**
- ALL CONSTRUCTION IS TO BE IN ACCORDANCE WITH COBB COUNTY, GEORGIA SPECIFICATIONS.
 - CONTRACTOR IS RESPONSIBLE FOR CONSTRUCTION AND MAINTENANCE OF EROSION AND SEDIMENT CONTROLS DURING ALL PHASES OF CONSTRUCTION FOR PROTECTION OF ADJACENT PROPERTIES, ROADWAYS AND WATERWAYS.
 - CONTRACTOR IS RESPONSIBLE FOR PROVIDING A BUILDING SITE FREE OF DRAINAGE PROBLEMS.
 - CONTRACTOR SHALL NOTIFY ALL UTILITIES AT LEAST 24 HOURS PRIOR TO START OF CONSTRUCTION TO VERIFY LOCATION OF ALL UTILITIES SHOWN OR NOT SHOWN.
 - ALL UTILITIES WITHIN ROADWAY SHALL BE BACKFILLED WITH STONE.
 - CONTRACTOR SHALL REPAIR AT HIS EXPENSE DAMAGE TO ANY EXISTING IMPROVEMENTS DURING CONSTRUCTION, SUCH AS, BUT NOT LIMITED TO, DRAINAGE UTILITIES, PAVEMENT STRIPING, CURBS, ETC. REPAIRS SHALL BE EQUAL TO OR BETTER THAN EXISTING CONDITIONS.
 - CONTRACTOR SHALL BE RESPONSIBLE FOR REMOVING ALL UNUSABLE MATERIALS FROM SITE.
 - SEED, MULCH, FERTILIZER AND WATER SHALL BE APPLIED TO ALL DISTURBED AREAS UNTIL A HEALTHY STAND OF GRASS IS ACHIEVED.
 - CONTRACTOR SHALL COORDINATE WITH POWER COMPANY PROVIDING TEMPORARY SERVICE FOR CONSTRUCTION FACILITIES DURING CONSTRUCTIONS.
 - THE CONTRACTOR IS SPECIFICALLY CAUTIONED ABOUT THE LOCATION AND/OR ELEVATIONS OF EXISTING UTILITIES SHOWN ON THIS DRAWING. THEY ARE BASED UPON RECORDS FROM VARIOUS UTILITY COMPANIES, DEEDS AND PLATS OF RECORD, AND WHERE POSSIBLE, ACTUAL FIELD MEASUREMENTS. THIS INFORMATION IS NOT TO BE TAKEN AS EXACT OR COMPLETE.
 - IT SHALL BE THE CONTRACTORS RESPONSIBILITY TO FIELD VERIFY THE EXACT LOCATIONS OF EXISTING UTILITIES WHICH MAY CONFLICT WITH PROPOSED IMPROVEMENTS.
 - THIS PROJECT WILL NOT REQUIRE WATER OR SEWER SERVICE. PROPERTY IS ON THE PUBLIC SEWER SYSTEM.
 - CONTRACTOR SHALL REMOVE ANY DIRT OR MUD FROM TIRES OF ANY CONSTRUCTION VEHICLES PRIOR TO LEAVING SITE.
 - REFER TO BUILDING/TOWER PLANS FOR PROPOSED DIMENSIONS AND OTHER SPECIFICS WHICH ARE NOT SHOWN.
 - CONTRACTOR IS RESPONSIBLE FOR MAINTAINING A PROPER TRAFFIC CONTROL PLAN FOR PUBLIC SAFETY ADJACENT TO CONSTRUCTION SITE. THE TRAFFIC CONTROL PLAN MUST BE IN ACCORDANCE WITH LATEST MUTCD EDITION.
 - BMPs MUST BE IN PLACE PRIOR TO CLEARING. REGARDLESS OF PLAN REQUIREMENT OR LOT SIZE, NO GRADING MAY BE DONE UNTIL BMP INSTALLATION IS COMPLETE. CONTRACTOR MUST CONTACT ENGINEERING SERVICES FOR INSPECTION OF BMPs PRIOR TO BEGINNING GRADING ACTIVITY.
 - ALL EASEMENTS TO BE GRASSED AND/OR RIP-RAPPED AS REQUIRED TO CONTROL EROSION.
 - DEVELOPERS AND/OR CONTRACTORS ARE RESPONSIBLE TO REMOVE OR CLEAN UP ANY AND ALL MULCH, SOIL, OR OTHER TYPE OF DEBRIS THAT COMES OFF THEIR SITE AND ENDS UP INTO A PRIVATE POND, ONTO PRIVATE PROPERTY, INTO A COUNTY OWNED POND OR COUNTY OWNED PROPERTY TO INCLUDE RIGHTS-OF-WAY.
 - THE CONTRACTOR WILL ADHERE TO THE WEIGHT LIMITS PRESCRIBED ON COUNTY MAINTAINED ROADS FOR HAULING EQUIPMENT AND/OR MATERIALS TO AND FROM THE SITE. THE CONTRACTOR WILL BE HELD RESPONSIBLE FOR ANY DAMAGES TO THE STREETS AND/OR UTILITIES DUE TO NON-COMPLIANCE OF WEIGHT LIMIT REGULATIONS.

NO.	DATE	REVISIONS
2	06/18/12	REVISED PER COMMENTS
1	05/29/12	REVISED PER COMMENTS
0	06/18/12	ISSUED FOR CONSTRUCTION

WALKER ENGINEERING INCORPORATED
8451 DUNWOODY PLACE
DUNWOODY, GA 30338
PHONE: 770-433-2006
FAX: 770-567-2156

PREPARED BY:
Municipal Communications LLC

IN CHARGE OF: JUL
DESIGNED BY: MSB
DRAWN BY: MSB
CHECKED BY: STH

ATLANTA ROAD
4620 ATLANTA ROAD
SMYRNA, GA 30080
OVERALL SITE PLAN

SLUP-3 (2012)
CONTINUED BY
STAFF UNTIL
SEPTEMBER



COMPILED BY: WALKER ENGINEERING INC. ALL RIGHTS RESERVED. THESE DOCUMENTS ARE INSTRUMENTS OF SERVICE AND NOT TO BE USED OR REPRODUCED WITHOUT WRITTEN PERMISSION OF THE COPYRIGHT OWNER.

SITE NO.	ATL023
DATE	05/18/12
FILE NO.	1110-0702T

IN CHARGE OF:	JLW
DESIGNED BY:	MSB
DRAWN BY:	MSB
CHECKED BY:	STH

ATLANTA ROAD
4620 ATLANTA ROAD
SMYRNA, GA 30080
SITE PLAN

NO.	DATE	REVISIONS
1	10/29/12	ISSUED FOR CONSTRUCTION
2	06/18/12	REVISED PER COMMENTS
3	06/29/12	REVISED PER COMMENTS

PREPARED BY: WALKER ENGINEERING INCORPORATED
8451 DUNWOODY PLACE
SANDY SPRINGS, GA 30076
TEL: 770-587-2196
FAX: 770-587-2196

PREPARED FOR: Municipal Communications LLC

